

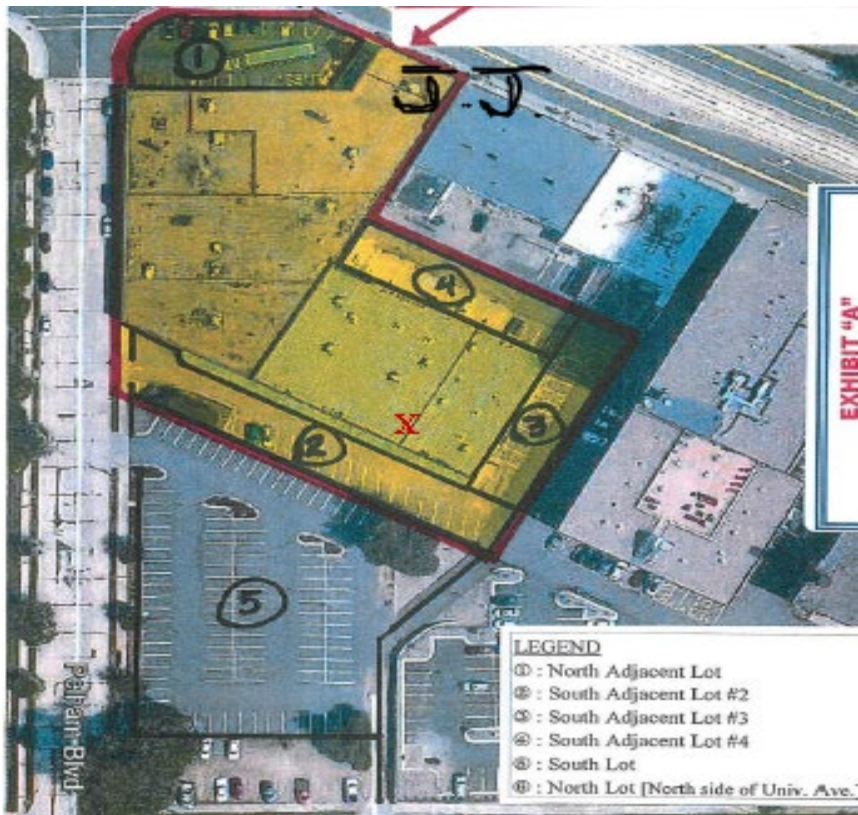
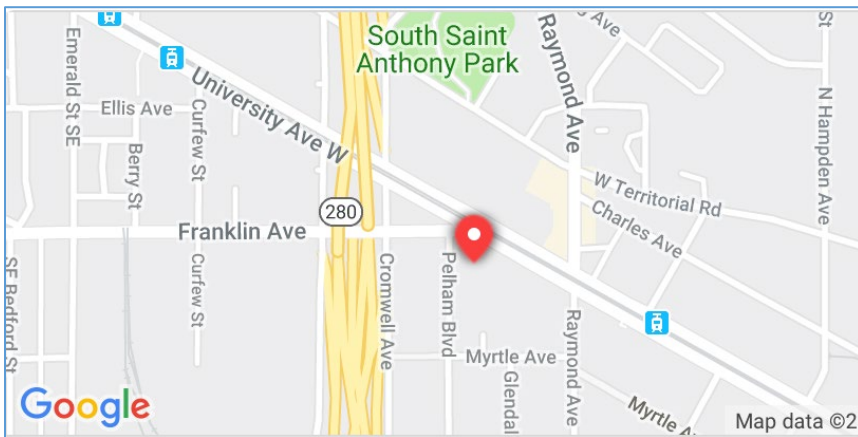
Directions to the Minnesota Housing Partnership office

2446 University Avenue West
 Suite 140
 St. Paul, MN 55114
 Main line (651) 649-1710
 Toll free (800) 728-8916
 Fax (651) 649-1725

2446 University Ave West office complex is directly off of Hwy 94 at the Hwy 280 / University Ave exit; at the intersection of University Avenue, Franklin Avenue, and Pelham Boulevard.

Follow the signs for University Ave and turn right onto Franklin Ave. From the north (or northeast) take Hwy 35W to Hwy 280, exit at University Ave, and turn left on Franklin Ave.

2446 University Ave West office complex is a four-minute walk from the Green METRO Green Line at the Raymond Ave Station stop.



You can access MHP's suite (**X on the map**) via two entrances. One is located across parking lot #2, which is off of Pelham Blvd. You may use Lot #5 to park your car.

Or, the other entrance is accessed through University Ave entrance. You may use this lot as well to park your car, Lot #1. You will see Jimmy John's on the left side (JJ on the map.) Park in the front of the building (facing University Ave/ Franklin Ave.) and follow the main hall. You will pass a small lounge with vending machines and MHP office # 140 is further down the hall on your right.